

UNILATERAL
SALIVARY REGION
SWELLINGS

Unilateral Salivary Masses

- Sialadenitis, Sialolithiasis
- Benign Neoplasms
- Malignant Neoplasms
- Mesenchymal Neoplasms
- MALT Lymphoma

Sialolithiasis

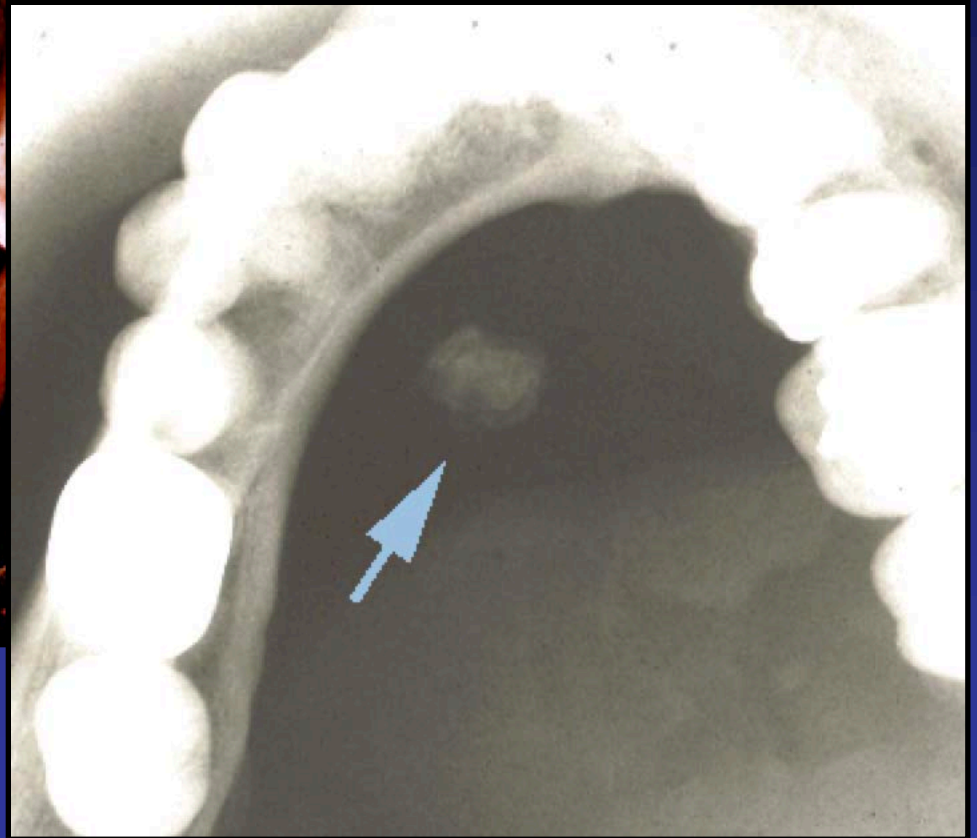
- SMG>Parotid Gland
- Pain during salivation
- Swelling
- Blocked Flow
- Occlusal, Submental Vertex Films
- Chronic Sclerosing Sialadenitis

Sialolithiasis

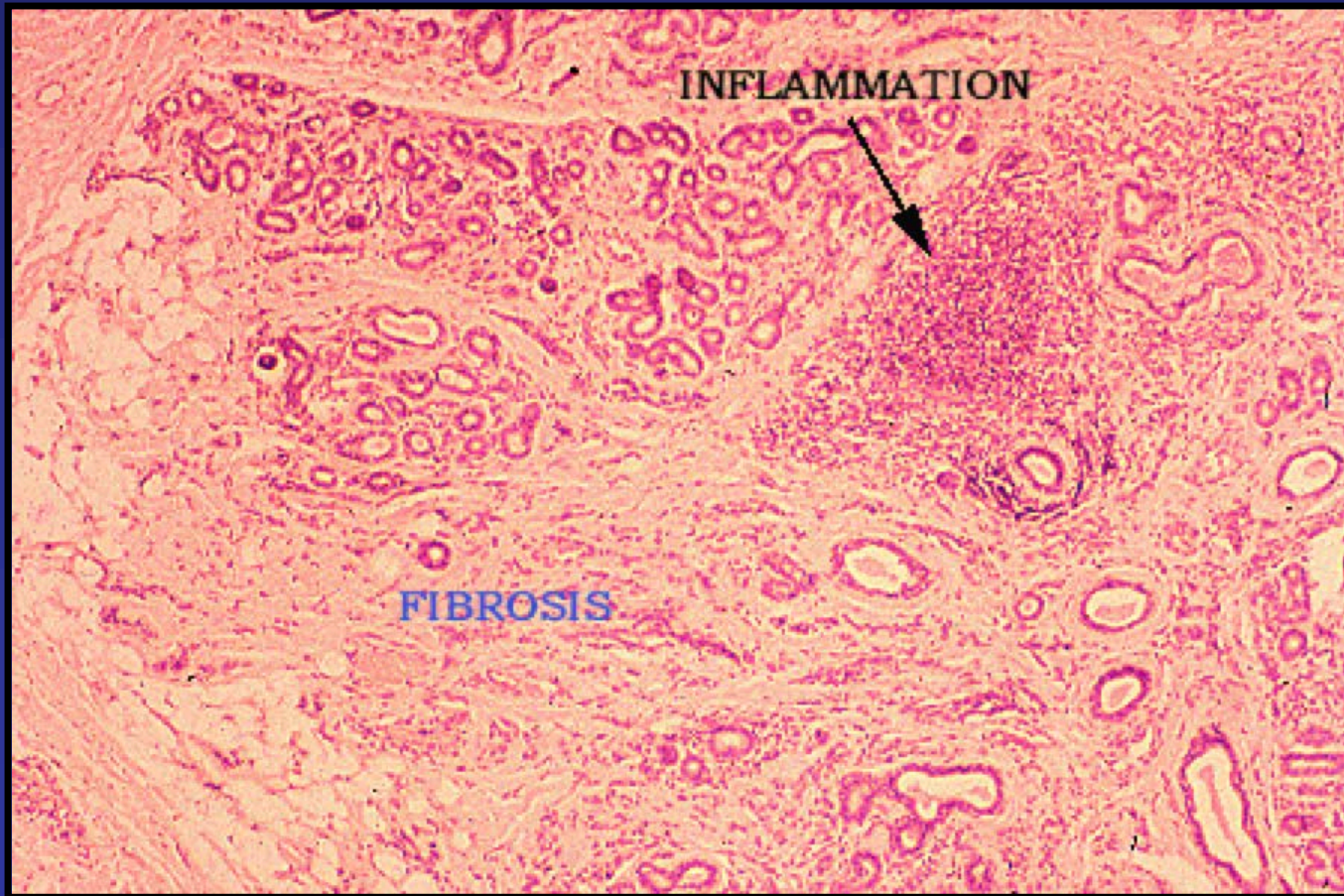
Clinical



Radiograph



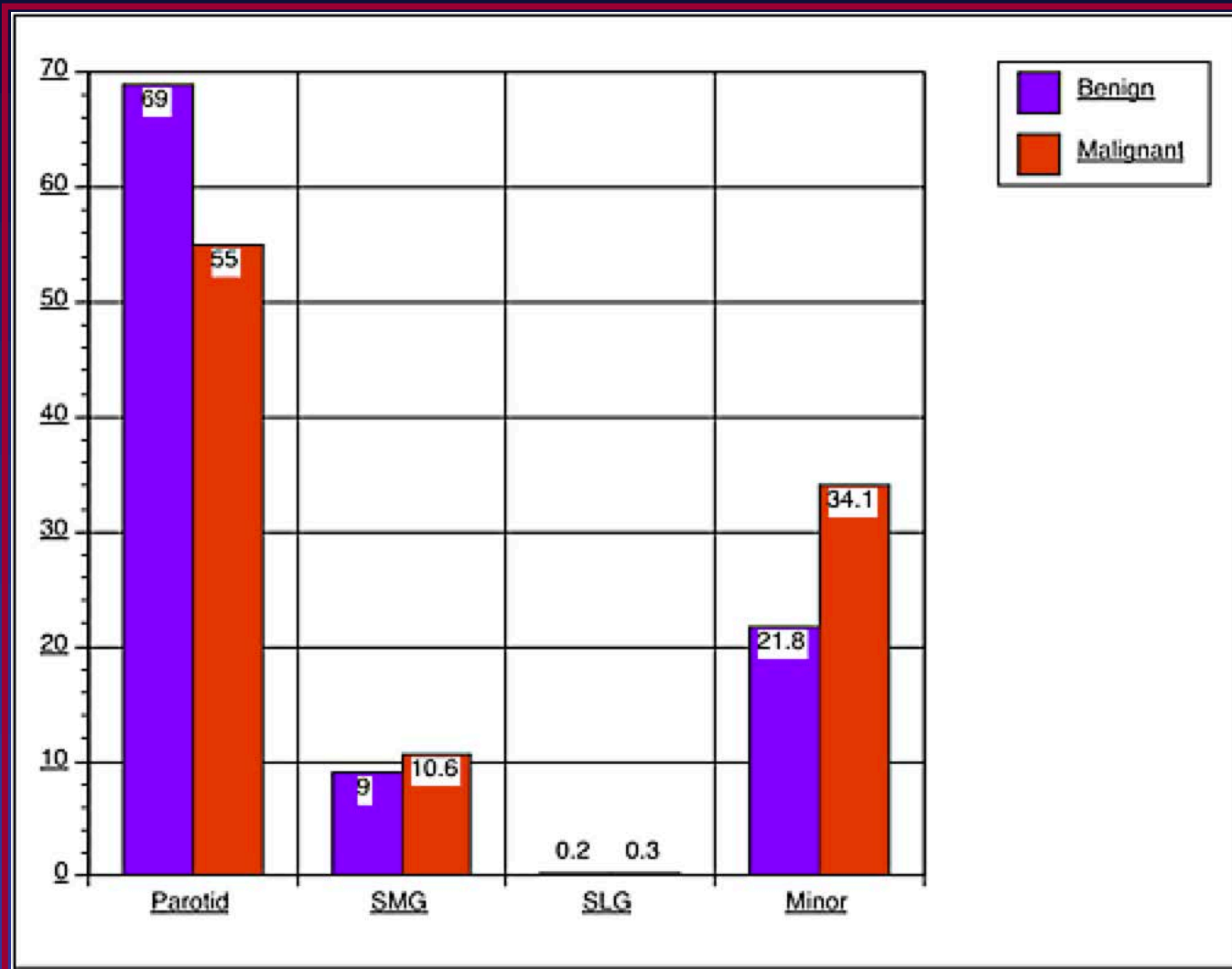
Chronic Sclerosing Sialadenitis Secondary to Obstruction



Salivary Adenomas

- Pleomorphic Adenoma
- Myoepithelioma
- Oncocytoma
- Papillary cystadenoma lymphomatosum
- Basal Cell Adenoma
- Sebaceous Lymphadenoma

Location of Salivary Tumors



Salivary Adenomas

Pleomorphic Adenoma



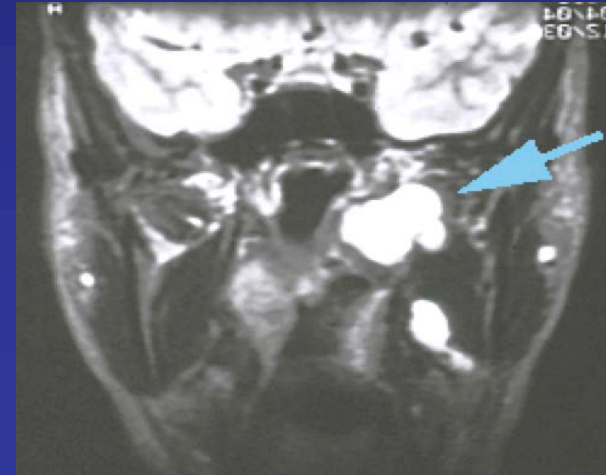
Warthin's Tumor



Oncocytoma

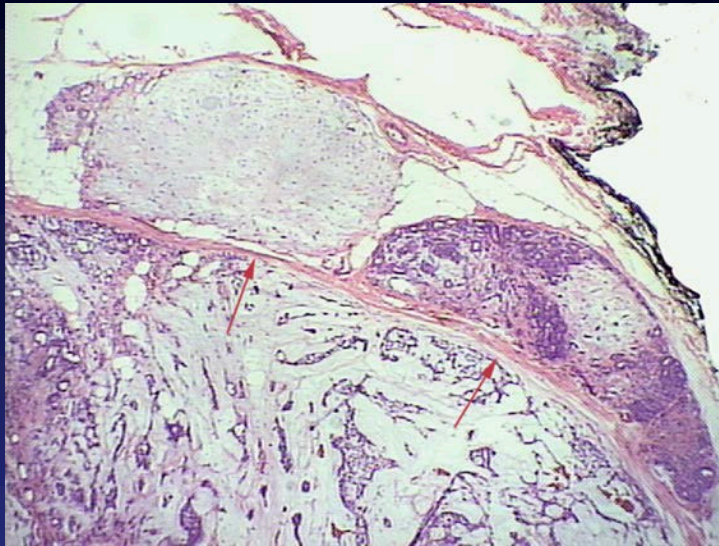


Recurrent Mixed Tumor

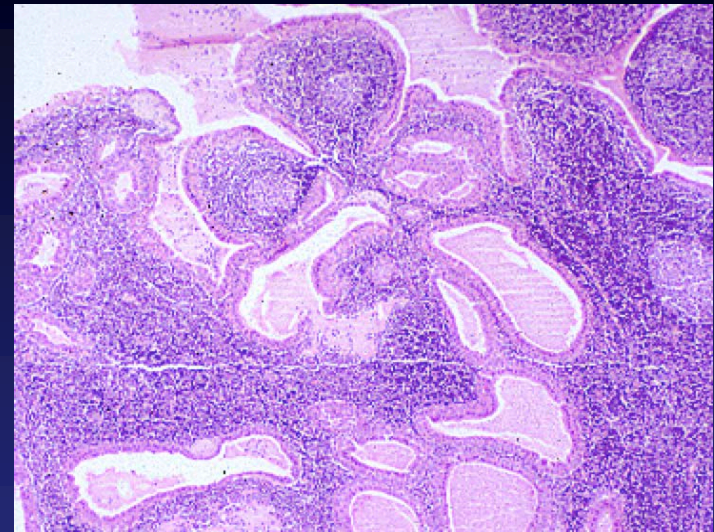


Salivary Adenomas - Histology

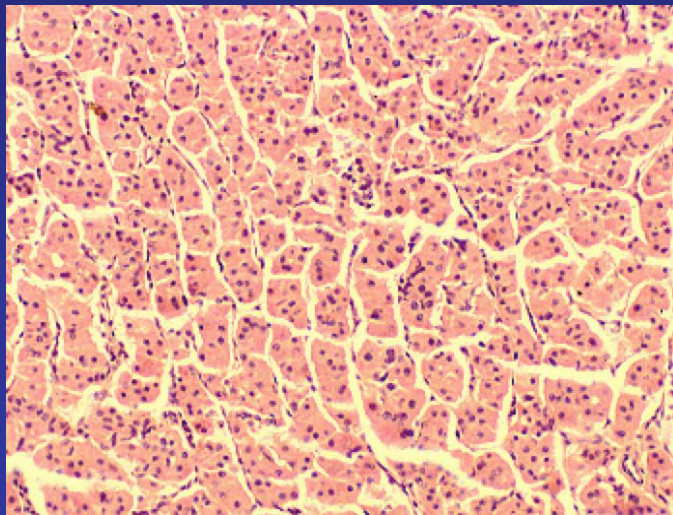
Pleomorphic Adenoma



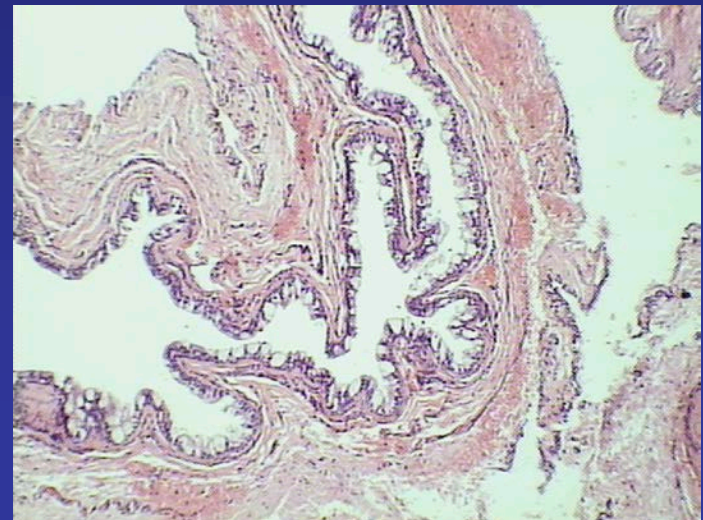
Warthin's Tumor



Oncocytoma



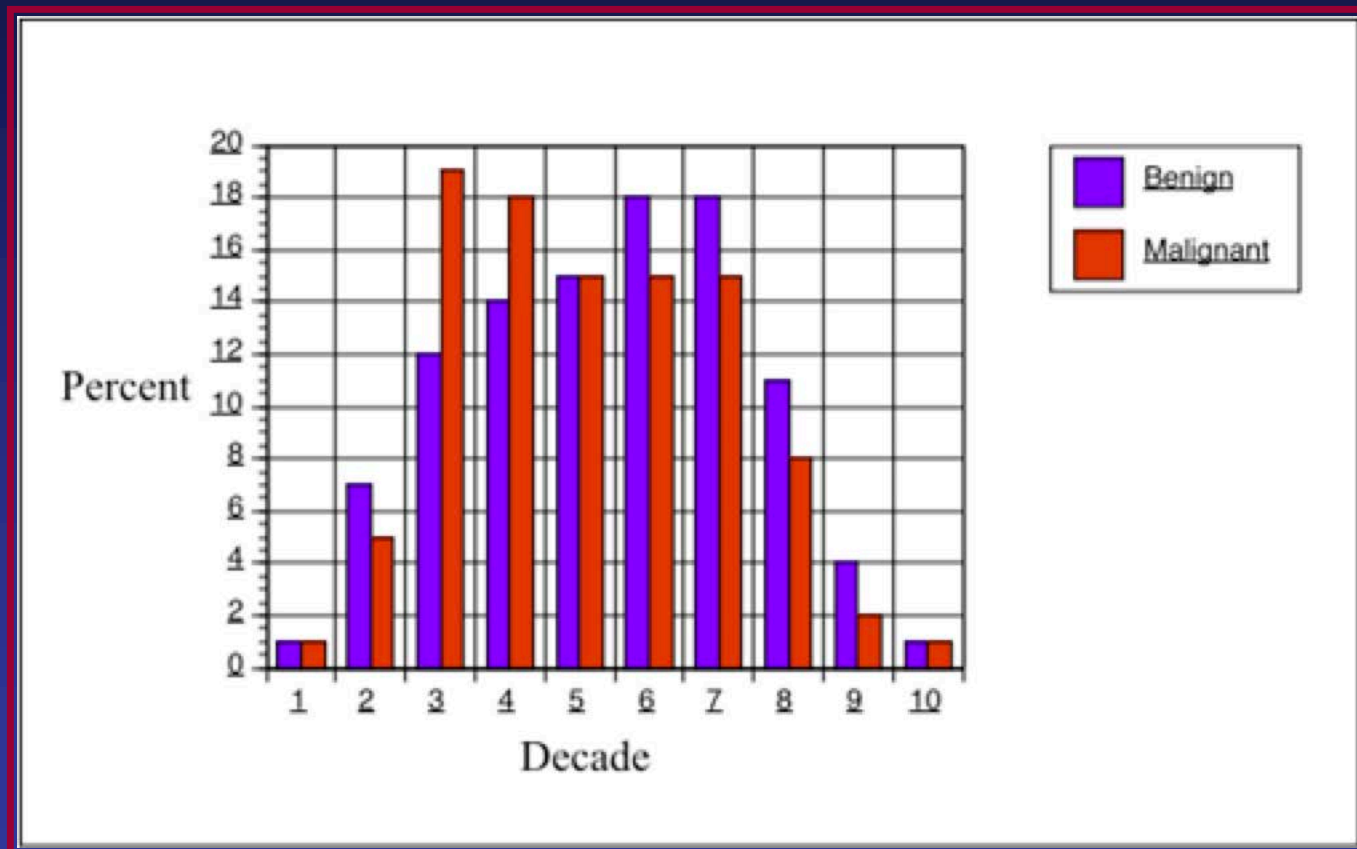
Cystadenoma



Salivary Adenocarcinomas

- Mucoepidermoid Carcinoma
- Adenoid Cystic Carcinoma
- Acinic Cell Carcinoma
- Adenocarcinoma NOS
- Carcinoma ex Mixed Tumor
- Epimyoeptithelioma of Intercalated Ducts
- Salivary Duct Carcinoma
- Basal Cell Adenocarcinoma

Age Distribution of Salivary Tumors



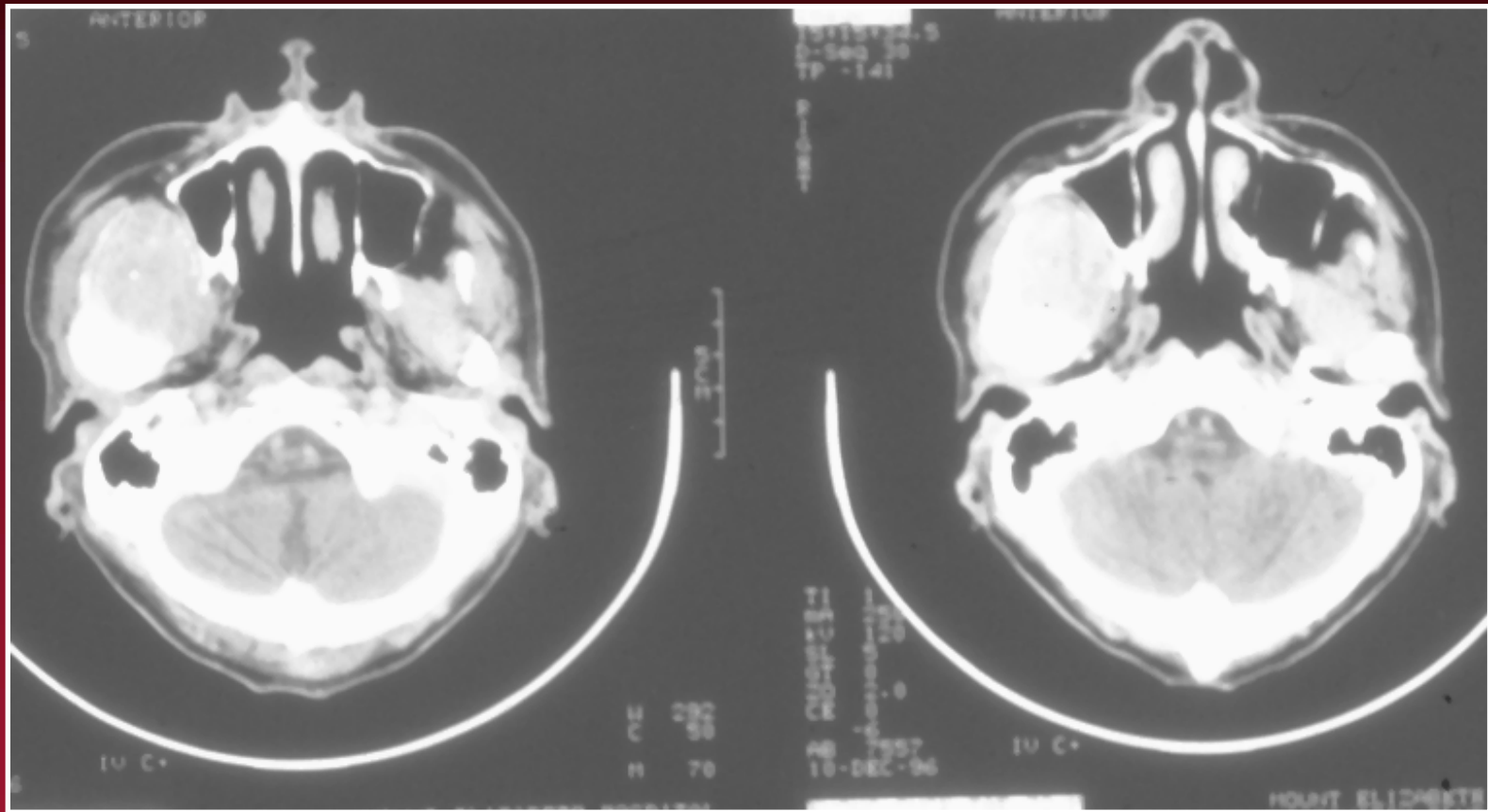
Salivary Adenocarcinomas

Mucoepidermoid CA

Carcinoma ex Mixed Tumor

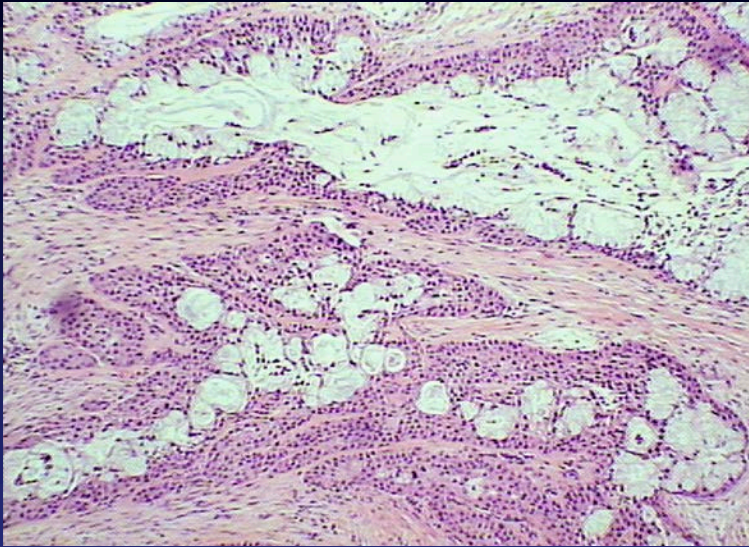


Adenoid Cystic Carcinoma

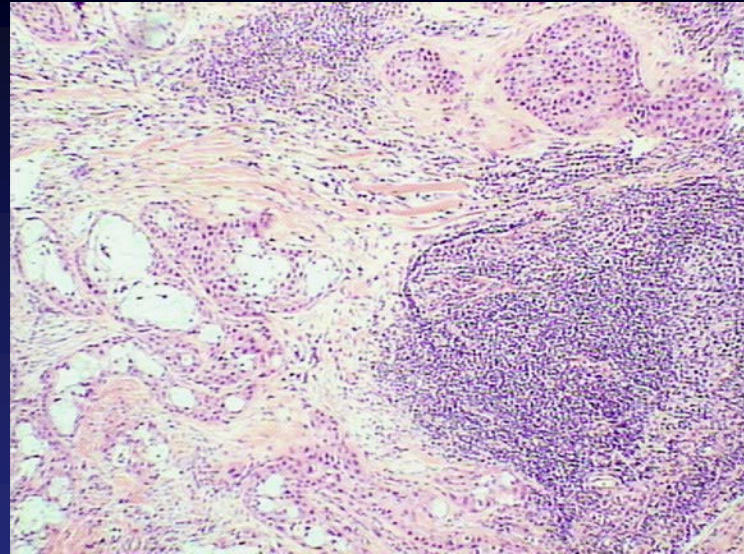


Salivary Adenocarcinomas

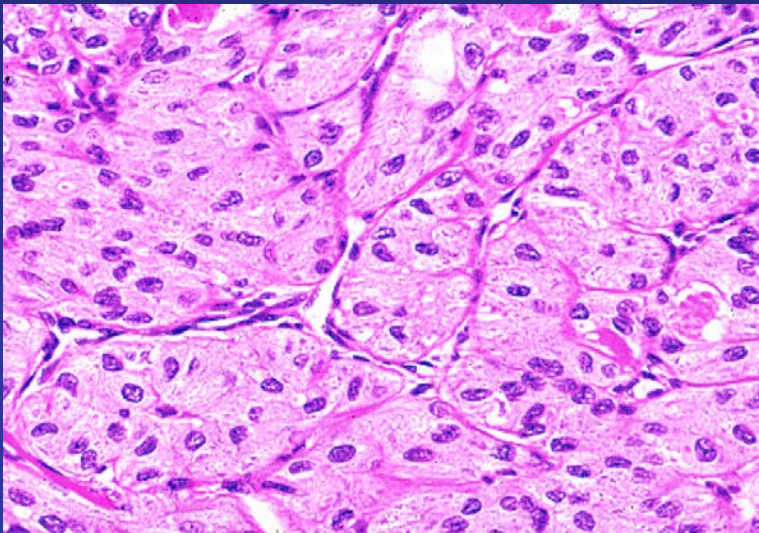
- Mucoepidermoid CA



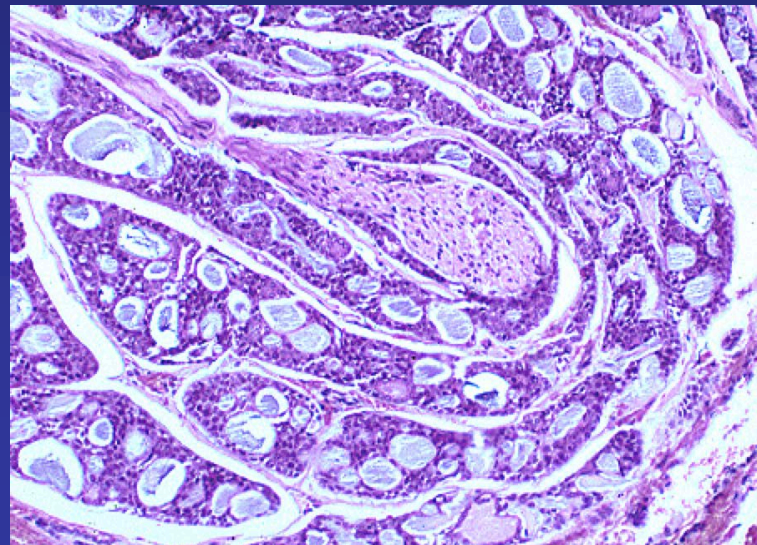
- MECA met in node



- Acinic Cell CA



- Adenoid Cystic CA

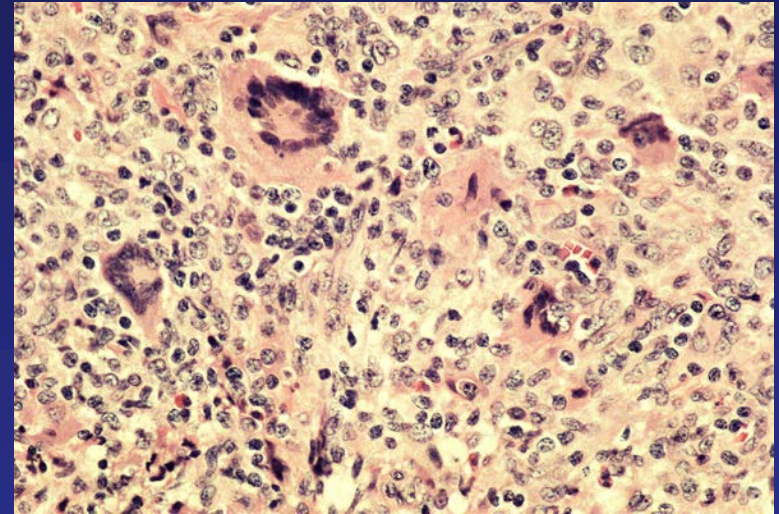
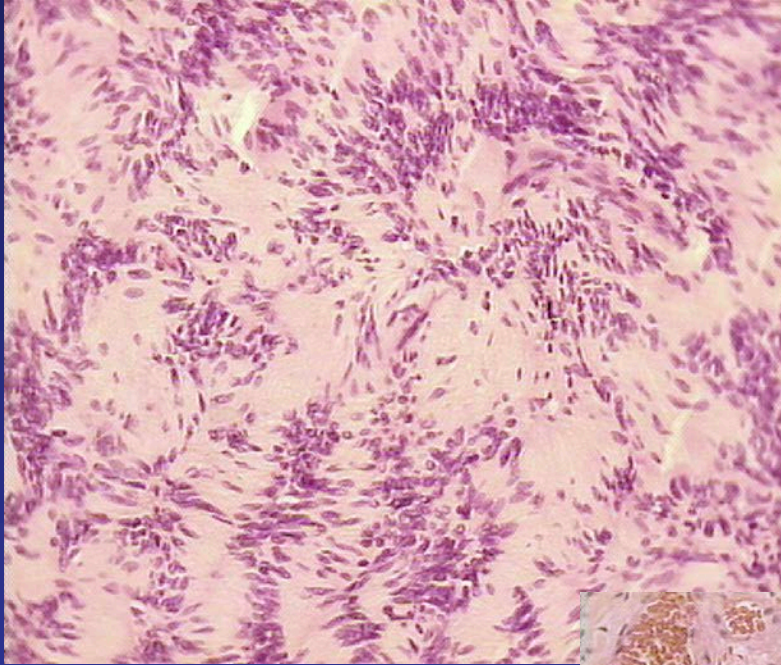


Mesenchymal Neoplasms

- Hemangioma
- Hemangioendothelioma
- Xanthogranuloma
- Nerve sheath tumors
- Sarcomas

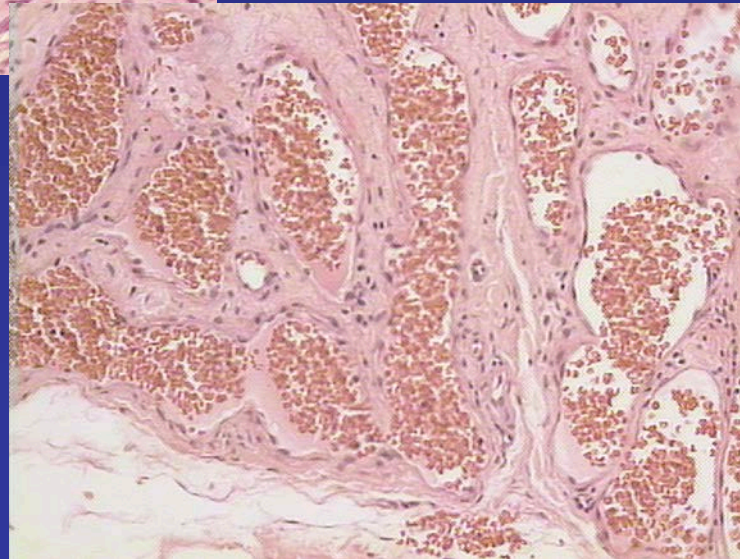
Stromal Neoplasms

- Neurilemmoma



Xanthogranuloma

- Hemangioma

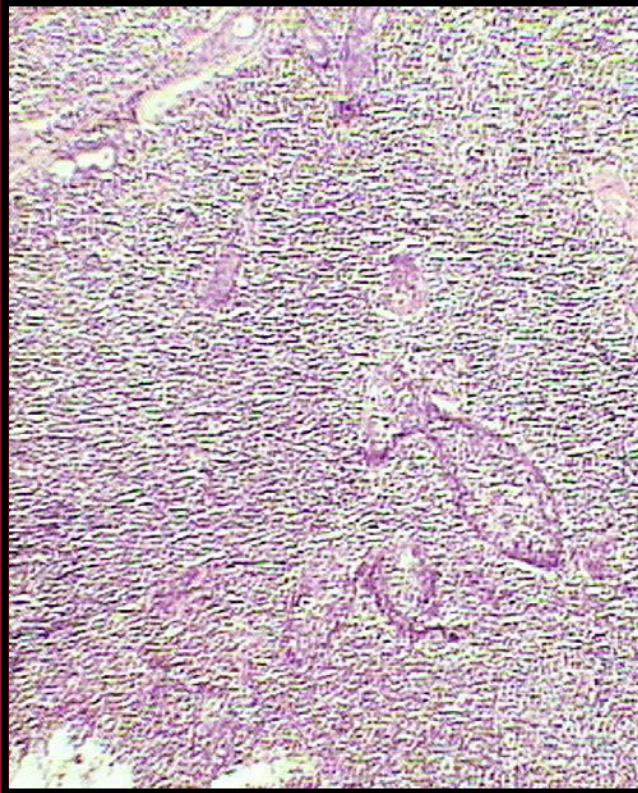


MALT Lymphoma

- Adults
- Diffuse Enlargement
- BLEEL morphology
- Plasmacytoid/Histiocytoid
- Good Prognosis

MALT Lymphoma

BLEEL Pattern



Plasmacytoid, Histiocytoid

