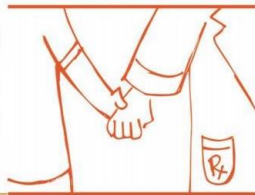


TIME FOR YOUR ANNUAL PART D PLAN CHECK-UP

Why is it important that I check my Medicare Part D plan each year?

- ❖ Plans change the list of drugs they cover every year.
- ❖ To make sure your plan does not have restrictions in place limiting your medication access.
- ❖ Plans change how much you pay for your drugs every year.
- ❖ The number and types of Part D plans change every year.
- ❖ Nearly 8 out of 10 beneficiaries have been able to save money on their Part D drug costs with our help.

PACIFIC
Partnering to Build a
Healthier Community



FOR MORE INFORMATION,
please visit go.pacific.edu/medicare
or call (209) 910-DRUG (3784)

IMPORTANT: CHANGES TO OUR MEDICARE EVENTS THIS YEAR

- For the safety of all involved, we will NOT have any in-person Medicare events this year.
- Instead, our Medicare services this year will be delivered through Zoom, WebEx or a phone call.
- When making an appointment you will be asked if you would like help with your Medicare Part D plan and/or a complete medication review.
- We will mail you materials after our time together.

COMMITTED TO HELPING MEDICARE BENEFICIARIES

Summary of our services:

- ❖ Review of your Medicare Part D Plan to see if we can lower your out-of-pocket medication costs
- ❖ Review of your medications to ensure they are safe and effective to take together

Medicare HEALTH FAIRS 2020



UNIVERSITY OF THE
PACIFIC

Thomas J. Long
School of Pharmacy

2020 MEDICARE HEALTH FAIR EVENT CALENDAR

10 virtual events this year.

If you want help with your Medicare Part D drug plan and/or a complete drug review, **PLEASE MAKE AN APPOINTMENT** as they are **NOW REQUIRED!**

Please call the phone number provided below each event to schedule your appointment.

PLEASE REMEMBER:

To have the following items available during your appointment



1. Your Medicare card
2. ALL of your medications

**Saturday & Sunday
October 17 & 18**

**9:30 AM – 4 PM
(209) 946-7658**

**Friday
October 23**

**9:30 AM – 4 PM
(209) 253-5128**

**Saturday
October 24**

**9:30 AM – 5:30 PM
(209) 280-0768**

**Saturday
October 31**

**9:30 AM – 4 PM
(209) 280-0768**

**Friday
November 6**

**9:30 AM – 4 PM
(209) 369-1591**

**Saturday
November 7**

**9:30 AM – 5:30 PM
(209) 956-3400**

**Saturday
November 14**

**9:30 AM – 4 PM
(209) 280-0768**

**Saturday
November 21**

**9:30 AM – 5:30 PM
(209) 280-0768**

**Sunday
November 22**

**9:30 AM – 4 PM
(209) 951-8545**